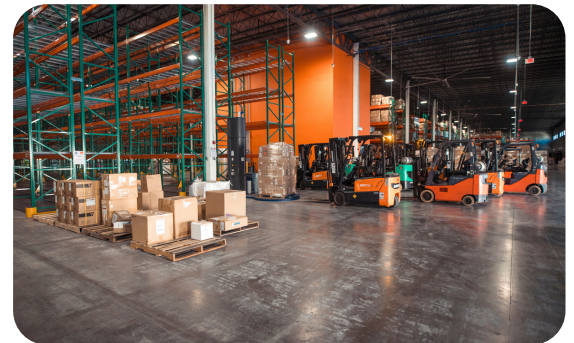
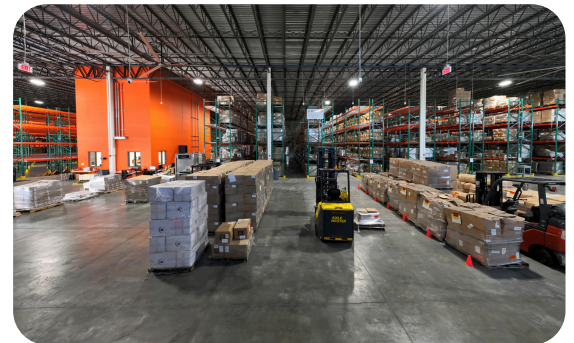


Domestic Solutions Capabilities



Our Differentiators

- Bonded facilities in Miami and Savannah. CFS facilities in Chicago, Columbus, Miami, New York and Savannah.
- Additional EFL Global facilities located in Atlanta and Charleston, along with multiple carrier partner options in the Los Angeles / Long Beach market.
- All chassis have hardwired GPS for tracking and real-time reporting capabilities via Samsara.
- EFL assets in Savannah, Charleston, New York, Columbus, and Chicago.
- 20 asset-based truckers which combined offers 5,000+ assets in major ports & ramps throughout the United States, Canada, and Mexico.
- Web-based LTL Tool for quotation and customs routing solutions – we will have a customer-facing page for direct access use.
- Trucking application that is installed in our trucks and links to SilverBullet for real-time visibility to shipment tracking and event date/time stamps.
- IML partner that includes direct contracts with the major rail lines throughout the US including the UP, NS, and CSX.



Charleston	Chicago	Columbus	Miami	New York	Savannah
260,000 sq ft	110,000 sq ft	100,000 sq ft	160,000 sq ft	100,000 sq ft	200,000 sq ft
Wando Welch	CFS	CFS	CFS / Bonded	CFS	CFS / Bonded
North Charleston	Port of Chicago	Port of Columbus	Port of Miami	Port of New York	North Savannah

Contact Us

efl.global

1500 NW, 97th Avenue
Miami, Florida

Tony Glass
tglass@efl.global | +1 443 865 1292