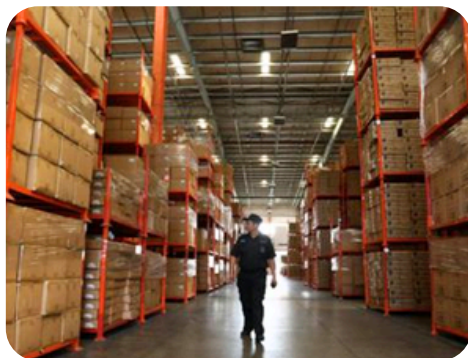


EFL Global Shanghai



About EFL Global

EFL Global provides air freight, ocean freight, warehousing, and other services to the international community. We offer an extensive service menu, backed by a network of owned offices and facilities across China and Hong Kong. We also offer weekly charters and daily block space agreements from Asia Pacific directly into the USA and Europe.

Facility Details

- 215,000 sq ft Bonded Facility
- Temperature-Controlled and High Value Cargo Storage Available
- C-TPAT and TAPA Certified
- 24/7 CCTV Manned Security
- Nearby Disaster Control Center for Emergencies

Contact Us



www.efl.global



Room 303-304, Building C, No. 1038, Jinshajiang Road, Putuo District, Shanghai, China, 200062